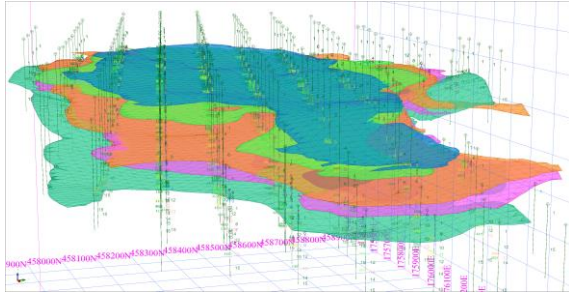


Coal Power Plant Luena, Province Haut-Lomami, Democratic Republic of the Congo

Client name: CTL S.A.R.L.

Service area	Contract value	Project duration
Extraction Planning	confidential	2014 - 2015



Project description:

Since the end of the ninetieth century the coal deposit Luena is known. Starting in the 1930ies, later in the 1970ies and 1980ies the deposit was extensively explored. Within a structure in the valley of Luena there are several independent basins of coal. It is estimated that about 70 million tons of coal are in place. Since beginning of the twentieth century coal was mined for the use as fuel for locomotives for the nearby railway. The usage of the coal for the future is to be burnt in a coal based power plant and the production of electrical energy. Within the tasks of a Bankable Feasibility Study for the power plant the client has given HPC the order to develop a mine plan for the coal extraction from different basins as fuel for the power plant.

Further project data:

- about 70 million t coal
- calorific value: ca. 4500 kcal/kg
- about 25% ash
- about 1 % sulphur
- about 1 million t coal extraction per year

Purpose:

- development project, mine planning
- Bankable Feasibility Study

Our services:

- technologic planning of the mining activities including recommendations for appropriate mining equipment
- geotechnical calculations
- calculations of the slopes
- dewatering
- geohydraulic calculations
- calculation of the tailings
- infrastructure planning
- preliminary planning and permitting according national and international regulations

Client benefits:

- 3D-Modelling of the coal extraction considering all relevant frame work conditions as basis for a Bankable Feasibility Study

